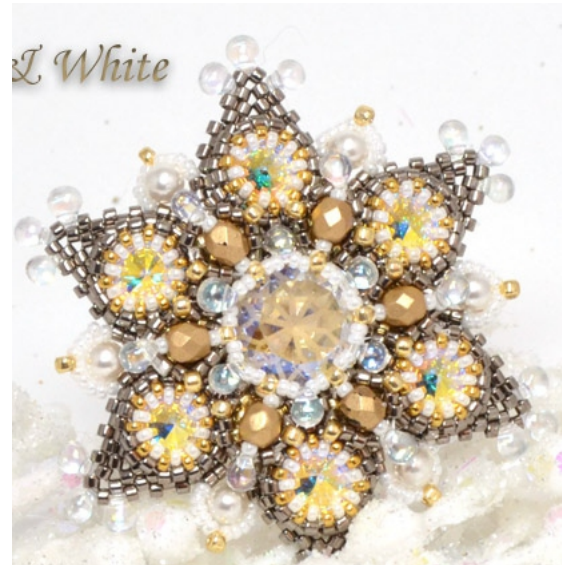


## Supply List May Bead Retreat May 15-18

### Sugar Flake

- (10 grams) 11° Cylinder Beads
- (4 grams) 11° Seed Beads
- (2 grams) 15° Color A Seed Beads
- (2 grams) 15° Color B Seed Beads
- (30pcs) 3.4mm Miyuki Drops
- (1pc) 14mm Crystal Chaton
- (6pcs) Ss39 Crystal Rivolis
- (6pcs) 4mm Fire Polish Beads
- (6pcs) 4mm Pearls



### Cathedral Bracelet

- 7mm Czechmates 2-hole Cabochons
- 4mm Firepolish beads
- 2.5x5mm Superduos
- Size 11 seed beads (SB11)\*\*
- Size 8 seed beads (SB8)\*\*
- 8 - Jump rings
- 4 Strand tube clasp
- 6lb Fireline beading thread
- Size 11 Tulip beading needle



\*The number of beads needed will be determined by the desired length of the bracelet. My bracelet has 3 units and uses (3) 7mm cabochons, (48) 4mm firepolish beads, and (116) superduos. My bracelet measures 6 inches before the clasp.

### Renee's Tennis Bracelet

- 60pc - CzechMates QuadraTiles
- 5.5g - Size 11 Seed Beads
- 2.5g - Size 15 Seed Beads
- 18" Long - 2.5mm or PP18 Cup Chain 2mm
- 1 - 2 Strand Box Clasp
- 6lb Fireline
- 1 - Size 11 Needle

